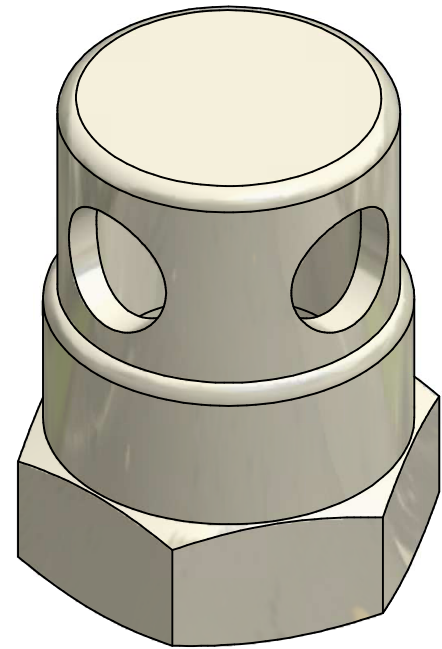
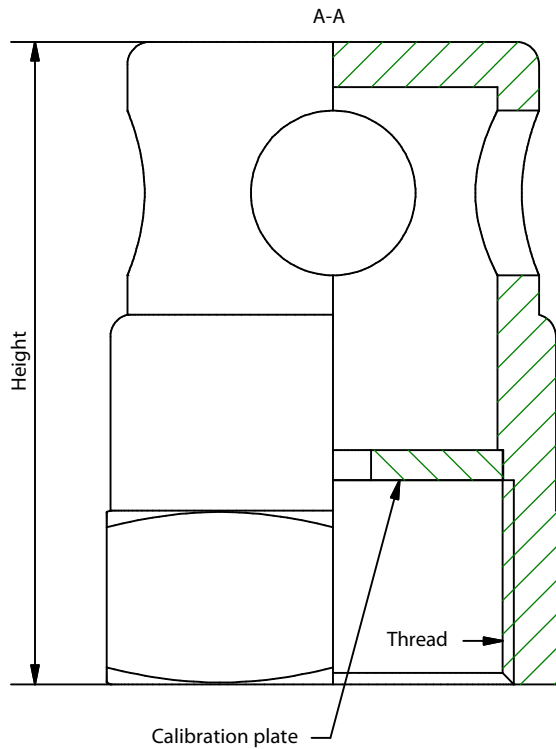
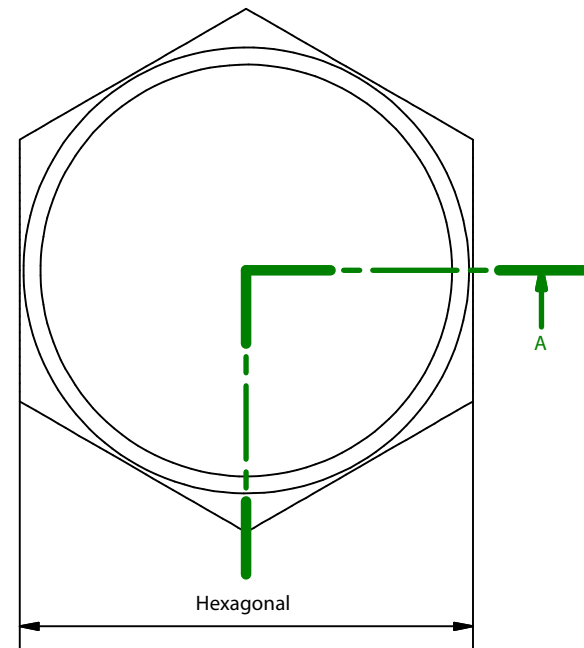




CALIBRATED RADIAL DIFFUSERS



| Reference | Thread | Height | Hexagonal | Weight |
|------------|-------------------|--------|-----------|--------|
| AEX/DR14C | Female Gas 1/4" | 30 mm | 18 mm | 33 g |
| AEX/DR38C | Female Gas 3/8" | 35 mm | 22 mm | 54 g |
| AEX/DR12C | Female Gas 1/2" | 46 mm | 27 mm | 96 g |
| AEX/DR34C | Female Gas 3/4" | 50 mm | 32 mm | 134 g |
| AEX/DR1C | Female Gas 1" | 60 mm | 40 mm | 262 g |
| AEX/DR114C | Female Gas 1 1/4" | 70 mm | 50 mm | 425 g |
| AEX/DR112C | Female Gas 1 1/2" | 85 mm | 60 mm | 777 g |



| Specifications | |
|----------------------------|------------|
| Name | Value |
| Body material | Steel F212 |
| Body finish | Chrome |
| Material calibration plate | Brass |


 Av. Alfonso Peña Boeuf, 6 y 9
 28022 MADRID - ESPAÑA
 TEL: +34 913121656
 FAX: +34 913295820

DATA SHEET

CALIBRATED RADIAL DIFFUSERS

Description: it offers a predetermined flow rate and a uniform distribution of the extinguishing agent inside or on the protected risk.

| Code sheet: | Group sheet: | Reference: | Drawn: | Date: | Revised: | Date: | Review: | Format: |
|----------------|--------------|------------|--------|------------|----------|------------|---------|---------|
| AEX-FTC-61-033 | FK-5-1-12 | VER TABLA | DCM | 27/07/2016 | MRC | 27/07/2016 | 1 | A4 |